

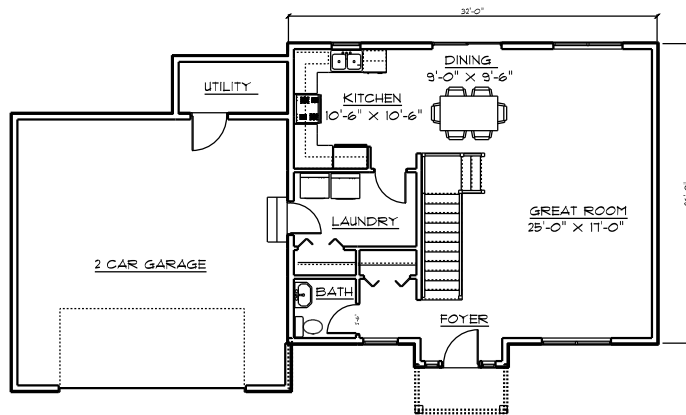
# BILLMAN CONSTRUCTION

1706 TOTAL SQ FT

THIS 3 BEDROOM, 2 1/2 BATH TWO STORY  
SLAB HOME BOASTS AN OPEN FLOOR PLAN  
WITH TOTAL FINISH SQ FEET OF 1706.  
CALL TODAY TO  
SCHEDULE YOUR APPOINTMENT!

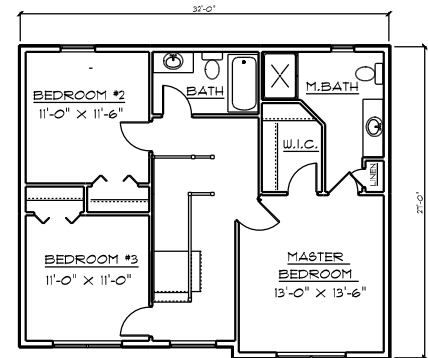


FRONT ELEVATION



MAIN FLOOR PLAN

FINISHED SQUARE FEET 864



SECOND FLOOR PLAN

FINISHED SQ FT 842

GREGG BILLMAN  
CELL # 218-348-0703

CALL TODAY TO START  
DESIGNING AND BUILDING  
YOUR NEXT HOME  
218-729-7570

AMERICA BUILD'S WITH BILLMAN'S